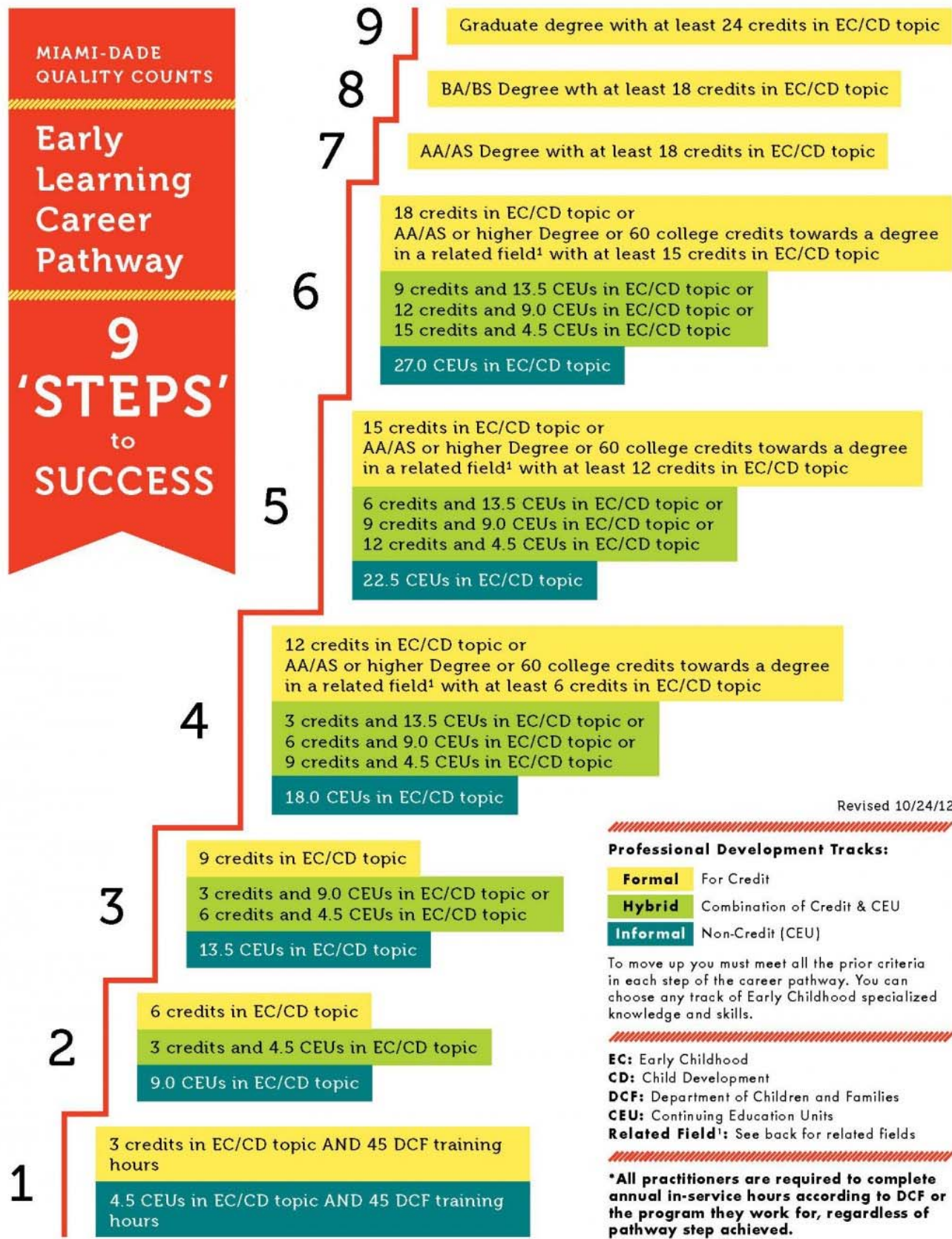


MIAMI-DADE
QUALITY COUNTS

Early Learning Career Pathway

9 'STEPS' to SUCCESS



Revised 10/24/12

Professional Development Tracks:

- Formal** For Credit
- Hybrid** Combination of Credit & CEU
- Informal** Non-Credit (CEU)

To move up you must meet all the prior criteria in each step of the career pathway. You can choose any track of Early Childhood specialized knowledge and skills.

- EC:** Early Childhood
- CD:** Child Development
- DCF:** Department of Children and Families
- CEU:** Continuing Education Units
- Related Field¹:** See back for related fields

***All practitioners are required to complete annual in-service hours according to DCF or the program they work for, regardless of pathway step achieved.**